



Crouch Court | Rivermill | Harlow | CM20 1PP

£1,000 PCM





Crouch Court | Rivermill  
Harlow | CM20 1PP  
£1,000 PCM

A ONE BEDROOM GROUND FLOOR FLAT located a short distance from Harlow Town Train Station. Features include uPVC double glazing, wet room, allocated parking and communal garden area. This property is available unfurnished NOW. This is a non-smoking property and the landlord does not allow pets.

- One Bedroom
- Allocated Parking
- Council Tax Band: A
- Ground Floor Flat
- Available NOW
- EPC Rating: TBC

Entrance Hall  
6'5 x 2'11 (1.96m x 0.89m)

Lounge  
8'10 x 16'4 (2.69m x 4.98m)

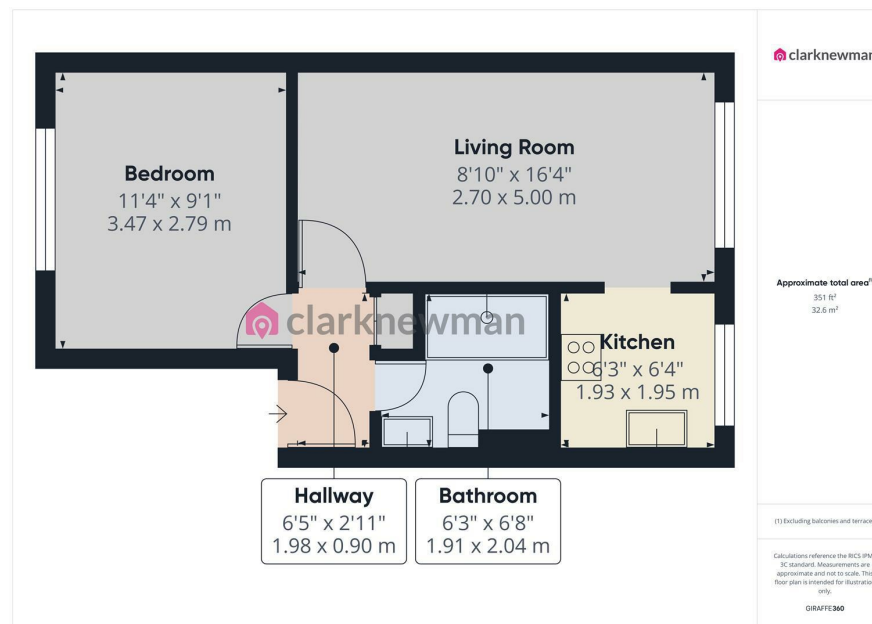
Kitchen  
6'3 x 6'4 (1.91m x 1.93m)

Bedroom  
11'4 x 9'1 (3.45m x 2.77m)

Bathroom  
6'3 x 6'4 (1.91m x 1.93m)

Communal Garden

Local Area



Energy Efficiency Rating		
	Current	Potential
Very energy efficient - lower running costs		
(92 plus) A		
(81-91) B		81
(69-80) C		
(55-68) D	59	
(39-54) E		
(21-38) F		
(1-20) G		
Not energy efficient - higher running costs		
England & Wales	EU Directive 2002/91/EC	

Equity House  
4-6 Market Street  
Harlow  
Essex  
CM17 0AH  
01279 400444  
hello@clarknewman.co.uk  
www.clarknewman.co.uk